



**MILES CITY DIVISION  
of the  
NORTHERN ROCKIES COORDINATING GROUP  
EASTERN ZONE**

**2018-2021**

**ANNUAL OPERATING PLAN**

**Between the**

**STATE OF MONTANA  
Department of Natural Resources and Conservation  
Eastern Land Office  
Southern Land Office**

**And the**

**STATE OF SOUTH DAKOTA  
State Division of Wildland Fire**

**And the**

**USDI  
Bureau of Land Management  
Eastern Montana/Dakotas District  
Miles City Field Office  
North Dakota Field Office  
South Dakota Field Office**

**Fish and Wildlife Service  
Mountain-Prairie Region  
Charles M. Russell National Wildlife Refuge**

**Bureau of Indian Affairs  
Northern Cheyenne Agency**

**And the**

**USDA  
Forest Service  
Custer Gallatin National Forest  
Ashland Ranger District  
Sioux Ranger District**

## 2018 NRCG MILES CITY DIVISION AOP SIGNATURE PAGE

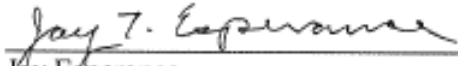
State of Montana  
DNRC, Eastern Land Office

  
Chris Pileski  
Area Manager  
4/6/18  
Date

State of Montana  
DNRC, Southern Land Office

  
Matt Walcott  
Area Manager  
4-26-18  
Date

State of South Dakota  
Division of Wildland Fire

  
Jay Esperance  
Division Director  
4-9-18  
Date

Montana Fire Warden Association

  
Rodney Dresbach  
Fire Wardens' Representative  
4/30/18  
Date

BLM, Eastern Montana/Dakotas District

  
Todd Yeager  
District Manager, Acting  
04/09/2018  
Date

USFWS, Charles M. Russell NWR

PAUL SANTAVY


Digitally signed by PAUL  
SANTAVY  
Date: 2018.04.11 09:35:51  
-06'00'

Paul Santavy  
Project Leader  
Date

BIA, Northern Cheyenne Agency

  
Digitally signed by  
CALEB CAIN  
Date: 2018.04.24  
16:40:38 -06'00'  
4/24/18  
Caleb Cain  
Agency Superintendent, Acting  
Date

USFS, Custer Gallatin National Forest

  
Mary Erickson  
Forest Supervisor  
17 APR 2018  
Date

## Table of Contents

Purpose & Authority .....	1
Glossary of Terms .....	1
Maps.....	1
Participants and Representatives.....	2
Utilization of Interagency Facilities.....	3
Interagency Cooperation and Coordination .....	3
Miles City Division Fire Management Group .....	3
Montana Fire Wardens.....	4
Standards .....	4
Shared Resources .....	4
Resolution of Disagreement.....	4
Operational Procedures .....	5
A. Fire Protection.....	5
B. Dispatch.....	5
C. Fire Prevention/Education and Mitigation .....	5
D. Fire Restrictions .....	6
E. Detection.....	6
F. Reporting Fires .....	6
G. Distance/Boundaries .....	6
H. Initial Attack .....	7
I. Command Structure.....	7
Fires That Escape Initial Attack/Project Fires .....	7
Structure Fire Protection .....	8
Decision Documents/Delegation of Authority.....	8
Aviation Management.....	9
Fire Cause and Determination .....	9
Fire Investigation .....	9
Fire Numbers/Reports .....	10
Prescribed Fires/Project Work .....	10
Resource Advisors .....	10
Reimbursement for Suppression Expenses .....	11
Mutual Aid Period.....	11
Repair of Suppression Damage.....	12
Communications .....	12
Training.....	12
Administrative Procedures.....	12
 Appendix A: Boundaries of DNRC State Land Offices and Counties .....	 13
Appendix B: EMFZ Dispatch Boundaries.....	14
Appendix C: Agency Protection Responsibilities.....	15
Appendix D: FWS Charles M. Russell NWR Fire Management Addendum.....	16
Appendix E: USFS Custer Gallatin National Forest Fire Management Addendum .....	19

**Table of Contents (continued)**

Appendix F: Harding County, South Dakota Fire Management Addendum.....24

Appendix G: BLM Fire Management Addendum.....25

Appendix H: Agency Resource Listing .....26

Appendix I: Agency Contact Listing .....28

## PURPOSE & AUTHORITY

This Annual Operating Plan (AOP) provides a basis for cooperative wildland fire and aviation management activities on adjoining agency, state and private lands within the Miles City Division of the Northern Rockies Coordination Group (NRCG) Eastern Zone.

This AOP is consistent with the guidance in the *Montana Cooperative Fire Management & Stafford Act Response Agreement* and the *Montana Statewide Operating Plan* for portions of Montana, North Dakota and South Dakota. This AOP is hereby made and entered into under the aforesaid authorities by and between the **State of Montana**, Department of Natural Resources & Conservation, Eastern Land Office and Southern Land Office; **State of South Dakota**, State Division of Wildland Fire, hereinafter referred to as the “**State**,” the USDI, **BLM**-Montana & Dakotas, Eastern Montana/Dakotas District; USDI, **USFWS**-Mountain-Prairie Region, Charles M. Russell Refuge; USDI, **BIA**-Rocky Mountain Region, Northern Cheyenne Agency; and the USDA, **USFS**-Custer Gallatin National Forest, Ashland Ranger District and Sioux Ranger District, hereinafter jointly referred to as the “**Federal Agencies**.” The Federal Agencies, the State and Local Government Agencies may be hereinafter jointly referred to as the “**Agencies**.”

## GLOSSARY OF TERMS

**Local Government Agencies** are any county (unincorporated towns), municipality, city, town, special district (i.e. fire district or service area), any Indian tribal government or authorized tribal organization, and any rural community, or other public entity.

**Jurisdictional Agencies** are responsible for all planning documents i.e. land use, resource and fire management plans and decision support documents, for a unit’s wildland fire and fuels management program.

**Protecting Agencies** implement the actions documented and directed by the appropriate planning documents and decision support documents for initial and extended attack on wildfire incidents. They provide the supervision and support including operational oversight, direction and logistical support to Incident Management Teams.

**Supporting Agencies** provide suppression or other support and resources to the Protecting Agency.

## MAPS

The maps on Appendixes A and B show jurisdictional boundaries of dispatch centers, counties, state land offices and federal agencies. Appendix C shows the protection lands of each agency.

## **PARTICIPANTS & REPRESENTATIVES**

State of Montana	Department of Natural Resources & Conservation (DNRC) Eastern Land Office (ELO) Southern Land Office (SLO)
State of South Dakota	State Division of Wildland Fire (SDWF)
Bureau of Land Management (BLM)	Eastern Montana/Dakotas District (EMDD) Miles City Field Office (MCD) South Dakota Field Office (SDD) North Dakota Field Office (NDD)
United States Fish & Wildlife Service (USFWS)	Charles M. Russell National Wildlife Refuge (CMR)
Bureau of Indian Affairs (BIA)	Northern Cheyenne Agency (NCA)
United States Forest Service (USFS)	Custer Gallatin National Forest (CGF) Ashland Ranger District (ARD) Sioux Ranger District (SRD)
Montana County Fire Wardens	Carter County Custer County Dawson County Garfield County McCone County Fallon County Powder River County Prairie County Richland County Wibaux County Big Horn County Rosebud County Treasure County
South Dakota County Fire	Harding County

## UTILIZATION OF INTERAGENCY FACILITIES

The Eastern Montana/Dakotas District (EMDD) Fire and Operations Buildings are owned by the BLM and located on BLM land in Miles City, Montana and occupied by BLM and State of Montana employees. Miles City Interagency Dispatch Center (MCC), which is located in the EMDD Fire Building, provides centralized dispatch services for the State of Montana, State of South Dakota, BLM, FWS, BIA and USFS.

Reimbursable costs to the BLM have been established through Memorandums of Understanding (MOUs), under the authority of *The Reciprocal Fire Act of May 27, 1955*, with the State of Montana and the State of South Dakota. The State of Montana MOU is in exchange for DNRC access to BLM-provided office spaces and an equipment compound. The State of South Dakota MOU is in exchange for MCC dispatching Harding County Volunteer Fire Department resources.

An *Interagency Agreement for Facilities Use (#LI6PG00024)* has been established between the BLM and USFS that outlines an Intergovernmental Agreement (IGO), which is prepared and reviewed annually. This Facilities Agreement provides access for the BLM to the Ashland Ranger District's warehouse, hangar and Diamond Butte and Poker Jim lookouts, as well as the Sioux Ranger District's office space and warehouse storage. This agreement also includes access into and access to communication locations where BLM has radio equipment housed. These communication sites are Poker Jim, Tripoint L.O., Stag Rock, and Home Creek repeater. A separate billing process as outlined in Appendix E establishes reimbursement procedures for quarters at the Ashland and Sioux Ranger Districts.

## INTERAGENCY COOPERATION AND COORDINATION

The State of South Dakota; DNRC, Eastern Land Office, - and Southern Land Office; USFWS, Charles M. Russell Refuge; USFS, Custer Gallatin National Forest; BLM, Eastern Montana/Dakotas District; BIA, Northern Cheyenne Agency; and Montana Wardens/ Fire Chiefs Representative are committed to the following mutual actions:

- **Firefighter and Public Safety is Our Number One Priority.**
- **Fire Management requires Partnerships, County, State and Federal.**
- **Maintenance of Safe Professional Interagency Fire Management Programs.**

**Miles City Division Fire Management Group:** This group will be established to provide oversight and recommendations for all interagency fire activities in the Miles City Division. The group will consist of one representative from each agency party to this agreement as designated by Agency Administrators. The group will oversee implementation and updating of this plan. The chairman will be rotated on an annual basis. The goal of this plan is to establish a high trust culture and represent a shared vision of interagency fire program management.

A Chairman will be nominated from the agency for the year shown below.

AGENCY	DATE
BLM	2018
State of Montana	2019
USFS	2020
State of South Dakota	2021
BIA	2022
USFWS	2023

This group will set strategic priorities for resources within the Miles City Division and communicate resource needs or availability to the NRCG Eastern Zone MAC group when conditions warrant.

Trigger points to consider include the following:

- Type 2/1 Incident Management Team requested or deployed; and/or
- Planning Level 4 and higher; and/or
- Level or extent of resource commitment; and/or
- Lightning Activity Level; and/or
- Higher level MAC is initiated at the NRCG Eastern Zone level.

The BLM Eastern Montana/Dakotas District will establish a designated conference call line for the months of July and August. Outside of this period, the agency that requests the conference call will initiate the conference call line. Notification will be provided to the NRCG Eastern Zone.

**Montana Fire Wardens:** By May 1st of each year, Federal Agencies will furnish to the State the names of individuals recommended for appointment as Fire Wardens. The State will appoint Fire Wardens as appropriate. Fire Wardens have the authority to administer State of Montana fire protection laws and rules (76-13-104, 76-13-116 MCA).

**Standards:** The goal of the cooperators is to achieve common standards within all the cooperators' best interest, recognizing differing agency missions and mandates. Each signatory to this plan recognizes that other cooperator standards are reasonable, prudent, and acceptable. This clause is not intended to affect the Jurisdictional Party's land management standards.

**Shared Resources:** Interagency funding, staffing, and utilization of fire resources will be pursued wherever an interagency approach is appropriate and cost effective. All State resources will be coordinated through the appropriate state organization. Shared staffing and funding will be commensurate with each Agency's use of resources and will be agreed to and documented.

**Resolution of Disagreement:** Should disagreement arise on interpretation of the provisions of this AOP or amendments and/or revisions thereto, that cannot be resolved at the Miles City Division Fire Management Group level, each party shall state the area(s) of disagreement in writing and present them to the other party for consideration. If agreement on interpretation is not reached within thirty (30) days, the parties shall forward the written presentation of the disagreement to the appropriate agency administrators, (i.e., States [Montana Area Manager and



South Dakota Division of Wildland Fire Director]; BLM District Manager; USFWS Project Leader; USFS Forest Supervisor, and BIA Superintendent).

## **OPERATIONAL PROCEDURES**

### **A. Fire Protection**

The states and counties will furnish fire protection consistent with each state's requirements on state and private lands. State and private lands that lie within federal boundaries, that are not affidavit lands or a part of a protection agreement, are protected by the counties. State of Montana and County Cooperative Agreements exist for each county in Montana. The State of South Dakota has established agreements with the Volunteer Fire Departments in Harding County.

The BLM will furnish fire protection to BLM, Affidavit, and Custer Gallatin National Forest lands within the Miles City Division. This agreement is established in the *Montana Statewide Operating Plan*.

CMR, and state lands within the refuge executive boundary, in Garfield and McCone counties are protected by USFWS fire crews located in Sand Creek, Fort Peck and Jordan.

The Northern Cheyenne Agency will furnish fire protection on trust lands, which is established in the *Bureau of Indian Affairs Rocky Mountain Agreement*.

### **B. Dispatch**

As signatory to this AOP, the Agencies give authority to the Miles City Interagency Dispatch Center's (MCC) Center Manager to provide services required in support of the MCC Annual Operating Plan, which is a supplement to this AOP. The MCC AOP will be reviewed annually by May 1<sup>st</sup>.

The Agencies agree to participate in the neighborhood dispatch system. MCC will notify Jurisdictional Agencies, including County Sheriff's Offices, about wildland fires that impact the Miles City Division.

MCC will be responsible for dispatching Agency resources per the MCC AOP. MCC will provide Expanded Dispatch services for any incident that occurs within the Miles City Division.

### **C. Fire Prevention/Education and Mitigation**

- The agencies will coordinate in fire prevention programs in the communities located in the Miles City Division.
- Restrictions and/or closures will be coordinated and implemented as per the Fire Restriction and Closure Plans for each area.

- Agencies will coordinate education and mitigation programs and activities, including county and rural fire assistance, in the communities located in the Miles City Division.
- Burning Permits are identified in specific State-County Cooperative Agreements.

#### **D. Fire Restrictions**

Imposing Fire restrictions is the responsibility of the agency administrator of each agency. The decision to enter into Stage 1 or 2 Fire Restrictions is based on current and expected weather and fuel conditions, and the frequency of human caused wildfires and their cause. Should an agency or government impose fire restrictions within their jurisdiction, enforcement of those restrictions is incumbent upon the agency that imposes the restriction.

#### **E. Detection**

All methods of detection may be employed throughout the fire season.

Aerial detection will be managed through MCC for the Miles City Division. CMR and MCC will contact one another whenever detection aircraft are flying over the refuge.

Fire Lookout Towers on USFS lands will be staffed by the BLM as budget allows.

#### **F. Reporting Fires**

All fires and initial action on or near land under the protection of an Agency to this agreement will be reported as soon as possible to the Protecting Agency through the appropriate dispatch center, which includes Federal Dispatch Centers (i.e. MCC) or County Sheriff's Offices. Upon notification, if the Protecting Agency fails to properly recognize and claim ownership, suppression costs for the Protecting Agency's proportionate share will be assessed upon discovering and proof of ownership by the agency that incurred suppression costs.

#### **G. Distance/Boundaries**

A fire burning on or adjacent to a protection boundary will be the responsibility of the protecting cooperators on either side of the boundary. Neither party will assume the other party is aware of the fire or that the other party will take action. Each party will make every reasonable effort to communicate with the other concerning the fire.

Refer to Appendix D for the CMR policy concerning boundary fires.

In instances where the protecting agency's response is constrained/delayed by distance, the closest protection agency should respond. These areas need to be identified and agreed upon between protecting agencies. In some instances, protecting agencies may develop agreements for protection if distances are prohibitive to a timely initial attack.

## **H. Initial Attack**

Each member to this operating plan may exchange initial attack resources. Federal and State resources will be coordinated through MCC.

Procedures:

1. Upon report of a fire, Agencies will take initial attack action.
2. When an agency is unable to contact the Protecting Agency that agency will dispatch initial attack resources to the fire. At the earliest possible time the agency will inform the Protecting Agency of actions they have taken.
3. All fire suppression action conducted on lands of other Agencies shall be consistent with that Agency's fire suppression policy and the terms of this agreement.
4. Agency-specific protocols governing fire suppression are located in the following Appendices to this AOP: (a) Appendix D for CMR lands administered by the USFWS in the Miles City Division; (b) Appendix E for CGF lands in South Dakota and Montana within the Miles City Division; and (c) Appendix F for Harding County, South Dakota.
5. Special concerns for firefighter safety specific to areas with known radiation concerns and specific geological hazard areas (i.e. abandoned uranium mines, known Erionite formations, coal seams, and Hydrogen Sulfide [H<sub>2</sub>S]) are addressed in Appendix E of this AOP. Firefighters will be provided information and action plan pocket guides.

## **I. Command Structure**

The levels of fire complexity and command will vary among agencies. All fires will have an incident commander who is in control of the incident. Unified command will be employed on fires that involve multiple protection jurisdictions. Agencies who provide fire protection for another through agreement will be provided with an agency representative or contact to the incident commander for and specific land management guidance regarding suppression activities.

## **FIRES THAT ESCAPE INITIAL ATTACK/PROJECT FIRES**

It is the responsibility of the Duty Officer(s) to notify agency administrators or delegate of emerging fires that require an extended attack management. The FMOs will involve agency administrators before ordering an Incident Management Team. Orders for Incident Management Teams will be placed through MCC. Fires involving multiple jurisdictions will be managed under a unified command.

As incidents grow in complexity, communication will be established with the jurisdictional Agency Administrator (see Appendix I for agency administrators) to ensure resource objectives are met.

The Agencies will assist each other when fires escape initial attack. Requests for personnel, equipment, aircraft and logistics support for fires that escape initial attack on federal lands will

be requested through MCC. For the counties the request will be placed through the county commissioners to the Montana DNRC; in South Dakota to the State Division of Wildland Fire; and in North Dakota to the North Dakota State Forest Service.

## **STRUCTURE FIRE PROTECTION**

The protection of human life is the single, overriding priority. Setting priorities among protecting human communities and community infrastructure, other property and improvements, and natural and cultural resources will be based on the values to be protected, human health and safety and the costs of protection. Once people have been committed to an incident, these human resources become the highest value to be protected. All WUI fires within the MCC Dispatch Zone are coordinated through MCC. The federal and state protecting agencies primary responsibility and objective for structure fire protection is to suppress wildfire before it reaches structures. The federal and state protecting agencies may assist tribal, county, district and municipal fire departments in exterior fire protection when requested. Exterior structure protection measures may include tactics such as foam or water application to exterior surfaces of buildings and surrounding fuels; fuel removal, and burning out around buildings and improvements. Structural fire protection which involves interior and exterior action on burning structures is the responsibility of tribal, county, district or municipal fire departments that have the jurisdictional authority, training, and equipment to take appropriate action where needed. For further reference, please see the *Northern Rockies Structure Protection Guidelines* at <http://www.fs.fed.us/r1/fire/nrcg/index.html>.

## **DECISION DOCUMENT / DELEGATION OF AUTHORITY**

It is recognized that initial attack and rapidly expanding incidents often involve multiple jurisdictions. Determining the appropriate jurisdictions and obtaining delegations of authority in an efficient and effective manner is often difficult and may be further hampered by the remoteness of incidents in relationship to Agencies having authority and jurisdictional responsibility.

The Agencies which are party to this AOP agree that initial attack delegation will be valid until a Protecting Agency Incident Commander or agency representative from the Agency having jurisdiction is on scene, or a revised or updated incident specific delegation of authority is signed. Incidents that have been declared as exceeding initial attack and transition to extended attack should have an incident specific delegation of authority in place as soon as possible. The delegation of authority for Type 3 or Type 4 incidents may be verbal or written based on the Agency Administrator's determination.

The jurisdictional agency will assume the lead for development of the decision document and delegation of authority as required. Appropriate fire management officials will provide information relevant to the initial stages of the decision document and may provide the situational briefing for the incoming Incident Management Team. If other jurisdictions are involved, the delegation of authority will be signed by all affected agency administrators, or their designees and a unified command will be established to manage the incident.

- The following decision document will be used as needed as according to policy:
  - USFS – WFDSS
  - Montana State – Incident Situation Analysis
  - Montana Counties – Incident Situation Analysis
  - BLM – WFDSS
  - BIA – WFDSS
  - South Dakota State – WFDSS
  - USFWS – WFDSS

For multi-jurisdictional incidents that require a decision document, the point-of-origin jurisdiction agency decision document will become the primary decision tool used by all affected agencies for that particular incident. Regardless of decision document utilized, the Federal Agencies must complete a WFDSS document.

## **AVIATION MANAGEMENT**

Aviation operations are governed by agency specific policies (i.e. DOI Manual 350, BLM 9400; FS 5700; DNRC 1500; etc.). Aircraft responding to fire suppression efforts will retain their own Agency's standards. There are interagency requirements which must be met (such as interagency inspection and carding/approval) to fly agency employees on partnering Agency aircraft.

BLM will notify neighboring agencies of any agency flights that occur within 5 miles of neighboring agency boundaries. Reference BLM State Aviation Boundary Plan.

As part of the aviation support to initial attack activities, Duty Officers should attempt to consult with the Jurisdictional Agency who manages the land before retardant is applied in potentially sensitive areas. Refer to Appendix D and the USFS-Custer Gallatin National Forest Aviation Plan.

Military Operating Area scheduling and deconfliction with the appropriate military flight scheduling desk will follow established procedures as outlined in the MCC AOP and Aviation Standard Operating Procedures. MCC will notify all agencies when the Powder River Training Complex Large Area Exercises occur via email notification.

## **FIRE CAUSE AND DETERMINATION**

All initial attack resources shall determine probable fire cause, whether human or natural. Cause determination must begin as soon as possible since evidence is easily destroyed. If the fire is suspected to be human-caused, every effort will be made to protect the origin, regardless of jurisdictional responsibility.

## **FIRE INVESTIGATION**

The Protecting Agency will notify the Jurisdictional Agency as soon as possible if the fire may potentially be a trespass fire. It is the Jurisdictional Agency's responsibility to request an

investigation. The Protecting Agency will then be responsible for investigating and determining the cause of the fire. Either the Protecting or Jurisdictional Agency may furnish a qualified Fire Investigator (INVF).

The Agencies may pursue any costs related to fire suppression costs, resource damage, and area emergency resource rehabilitation.

## **FIRE NUMBERS / REPORTS**

MCC will assign fire and incident numbers to each fire that they dispatch. MCC will coordinate with Bozeman Dispatch Center to initiate USFS SO Fire numbers.

State fire numbers will be assigned for fires when the DNRC / SDWF assists the county or federal agencies.

BIA units are responsible for issuing fire and incident numbers on their initial attack fires.

Agencies will furnish appropriate information for completing the individual fire report within 5 days after fire is declared out. Jurisdictional Agencies will receive a copy of MCC's fire reports, along with GIS shape files for fires that are 5 acres or larger.

MCC will input BLM and USFS incidents that they dispatch into the *Incident Qualification and Certification System (IQCS)*. FWS will input FWS incidents into IQCS. The BIA will input BIA incidents into IQCS. The States will input State of MT and State of SD fire numbers into IQS.

## **PRESCRIBED FIRES / PROJECT WORK**

Each Agency will retain responsibility for their fuels management program. The equipment and resources of all agencies may be utilized to support each other on a reimbursement basis. Reimbursement will be agreed upon prior to project implementation.

It is the responsibility of the initiating Agency to ensure adequate funding is available.

Fire crews may be utilized for resource improvement activities, as negotiated, with approved work plans.

Refer to Appendix E for further guidance regarding USFS protocol.

## **RESOURCE ADVISORS**

In an initial attack, extended attack or escaped fire situation, the protecting agency will contact the jurisdictional agency, and the jurisdictional agencies will assess the need to assign a qualified Resource Advisor. Under unified command, agencies involved will jointly assess the need to assign a Resource Advisor and make recommendations or act on behalf of the agency administrator for decision.

## REIMBURSEMENT FOR SUPPRESSION EXPENSES

The Agency requesting resources is responsible for the cost of ordered resources unless mutual aid or cost share agreements apply. The sending Agency is responsible for the cost of resources sent to a fire that have not been specifically ordered by the other Agency through MCC.

When a Protecting Agency takes suppression action on lands it protects for a Jurisdictional Agency, and the Jurisdictional Agency is requested to assist, the Jurisdictional agency will be considered a supporting agency and reimbursed as appropriate under conditions of this agreement. The exception is if the parties involved are Federal Agencies.

Agencies will develop cost share agreements as appropriate when multi-jurisdictional incidents occur. Guidelines, templates, and methodologies specific to Northern Rockies for developing cost share agreements and decision documents can be found at <https://gacc.nifc.gov/nrcc/nrcg/committees/business/toolbox/toolbox.htm>.

## MUTUAL AID PERIOD

When a Local Government Agency takes suppression action across jurisdictional boundaries in support of a Protecting Agency, the Protecting Agency will not be required to reimburse the Local Government Agency for costs incurred following the initial dispatch of any ground resources to the fire for the duration of the reciprocal period.

- State of Montana Counties - Reciprocal Fire Protection Agreements (Mutual Aid): The Local Government Agency shall assume its own full cost of expenditures for a maximum of eight hours, the reciprocal period, unless the Protecting Agency requests the Local Government Agency to assist during any time of the incident. If the Protecting Agency IC requests the Local Government Agency to assist, the Local Government Agency may be paid back to the first hour of initial dispatch to the incident.

In addition, the Federal agencies may provide a maximum of twenty four hours of mutual aid to Counties on State or private lands in Montana. Refer to DNRC-County Cooperative Agreements.

- Harding County Volunteer Fire Departments (Camp Crook, Harding, Ludlow )- Reciprocal Fire Protection Agreements (Mutual Aid): The Harding County VFDs shall assume their own full cost of expenditures for a maximum of three hours, the reciprocal period, unless the Protecting Agency requests Harding County VFDs to continue to assist past the reciprocal three hour period. If requested by the protecting agency, the Harding County VFDs may be paid back to the first hour of initial dispatch to the incident. Refer to the State of SD/Harding County VFD Agreement.

In the case of reciprocal fire protection, priority will be given to the release of a supporting Agency when it is mutually agreed upon by the initial attack forces that the fire situation is such that the Protecting Agency's forces on the scene can adequately control the incident. Furthermore, within its capabilities, the Protecting Agency will render support to the supporting

Agency to include but not limited to food, water, and additional forces to expedite release of the supporting Agency in advance of the maximum twelve hour reciprocal fire protection.

Agreements will follow the Northern Rockies Mobilization Guide and Interagency Incident Business Management Handbook.

## **REPAIR OF SUPPRESSION ACTIVITY DAMAGE**

Suppression activity damage repair will be the responsibility of the protecting agency or cooperator. Resource Advisors will be consulted prior to initiating any agency land rehabilitation work. Emergency Stabilization and Burned Area Rehabilitation will be the responsibility of the jurisdictional land agency.

For Federal agencies, requests for Emergency Stabilization and “Burned Area Rehabilitation” (BAR or BAER) assessments will be initiated by the jurisdictional agencies.

The Local Agencies will need to consult with the State of MT or State of SD for guidance on requesting Suppression Activity Damage Repair and ES/BAR actions on Private or State lands.

## **COMMUNICATIONS**

The agencies agree to allow the use of communication systems such as, computer system access, data transmission lines, and communication sites when there is mutual benefit to the parties, and permits agencies to access communications sites for purposes of annual maintenance and up keep of their respective radio and repeater equipment. Access means travel routes to and into the buildings where equipment is housed.

The FCC requires that individual Memorandums of Understanding be developed and signed when an agency is using another agency’s radio frequency for Joint Operations and Mutual Aid.

MCC will have the Radio Communication Plan and radio frequencies available at request.

## **TRAINING**

The Agencies party to this agreement will coordinate wildland fire training locally, within the county, state and the Geographic Area. Zone training representatives are responsible for coordinating with all Agencies for the planning and delivery of wildland fire training.

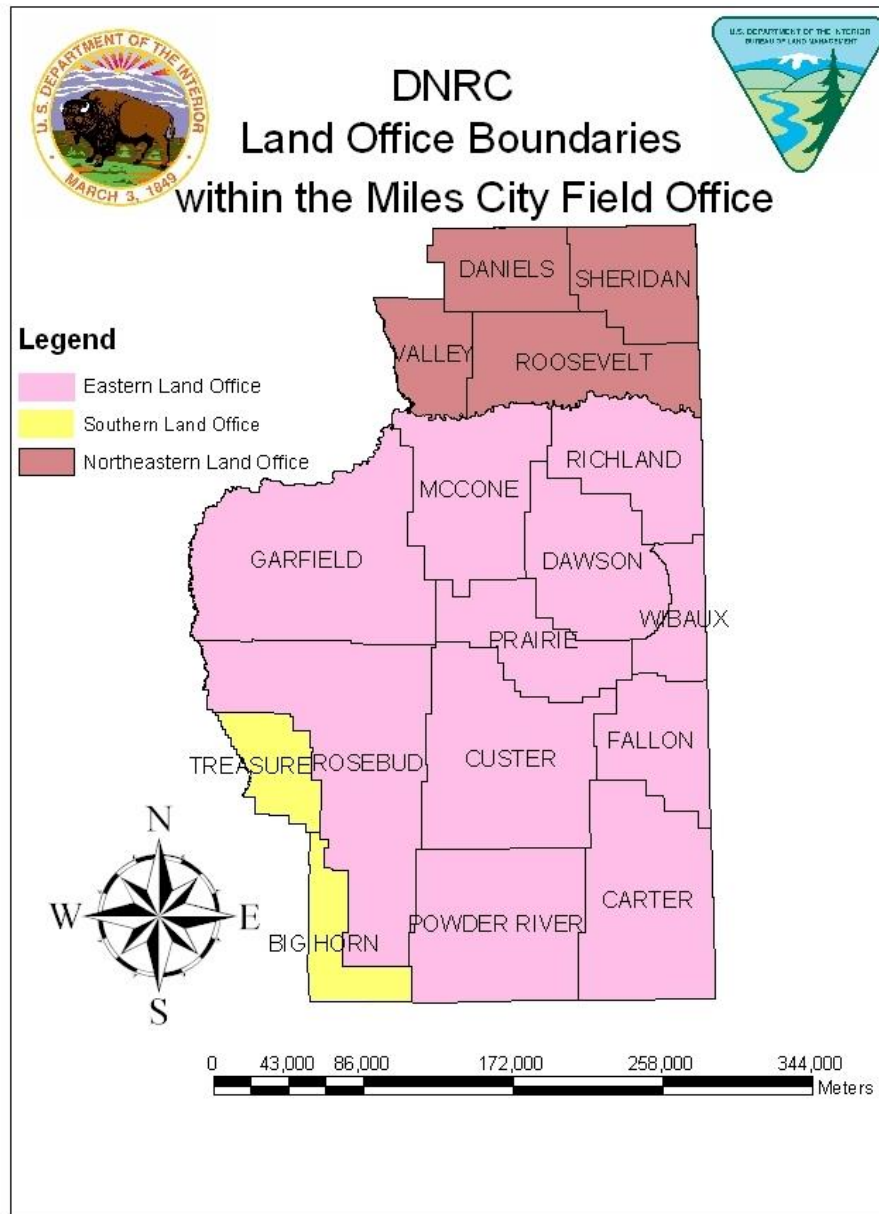
## **ADMINISTRATIVE PROCEDURES**

This operating plan will be reviewed annually by May 1 and remain in effect until cancelled or superseded by an updated plan by mutual agreement of the Agencies.

Modifications that are minor in nature will be reviewed annually and concurred to by all parties; however, new signatures will not be required. Modifications that change the intent of the operating plan will be distributed for Agency signature.



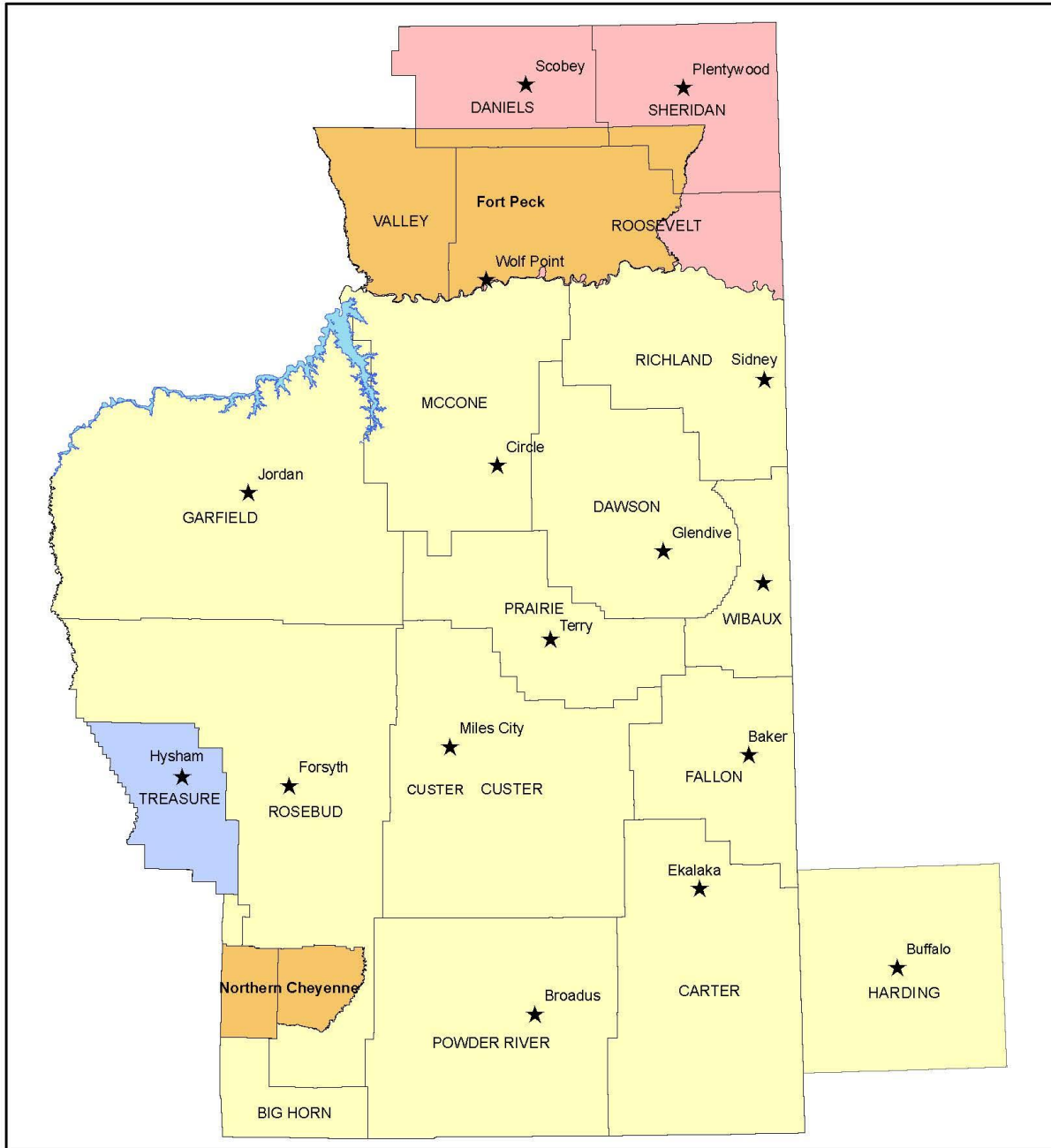
**APPENDIX A**  
**BOUNDARIES OF DNRC STATE LAND OFFICES AND COUNTIES**



## APPENDIX B DISPATCH BOUNDARIES



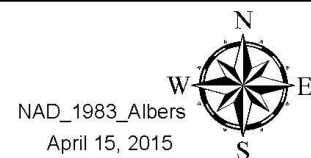
### Dispatch Boundaries within the Eastern Montana Fire Zone



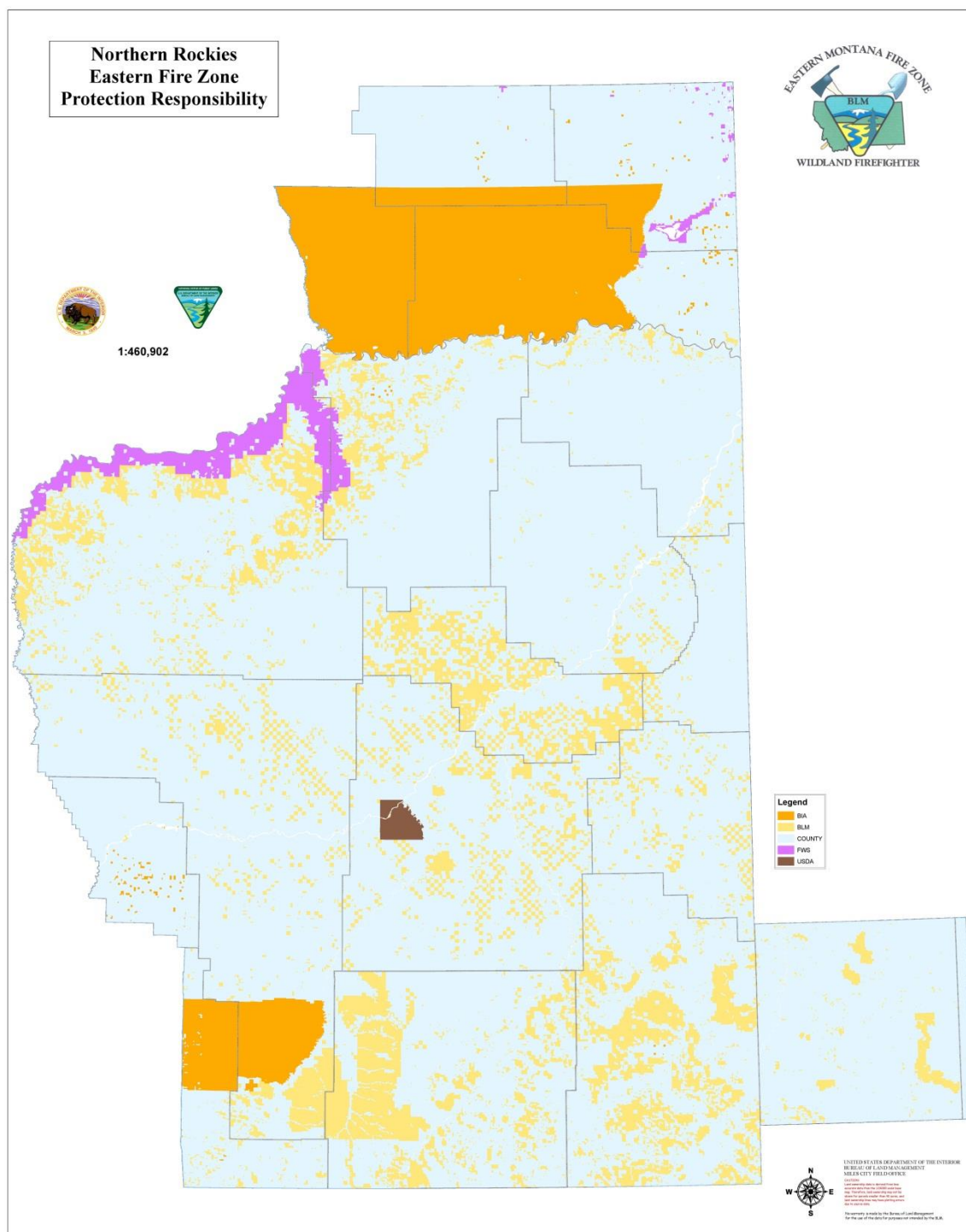
**Dispatch Zones**

- Billings Dispatch Center (BDC)
- Miles City Dispatch Center (MCC)
- Lewistown Dispatch Center (LEC)
- Bureau of Indian Affairs (BIA)

0 10 20 40 60 80  
Miles



# APPENDIX C AGENCY PROTECTION RESPONSIBILITY



**APPENDIX D**  
**FWS CHARLES M. RUSSELL NWR FIRE MANAGEMENT ADDENDUM**

**US Fish and Wildlife Service**  
**Charles M. Russell National Wildlife Refuge**  
**and**  
**Bureau of Land Management**  
**Eastern Montana/Dakotas District**

**A. INTRODUCTION**

Purpose of the Appendix is to provide a basis for cooperative wildland fire management activities between the U. S. Fish and Wildlife Service (FWS) Charles M. Russell (CMR) National Wildlife Refuge (NWR) and the Bureau of Land Management (BLM) Eastern Montana/Dakotas District (EMDD).

**B. REPORTING FIRES**

1. Fires can be reported to any agency or dispatch office. Whoever takes the report of fire will contact the other agency if the fire is on or threatening the other agency's lands. Following is the list of phone numbers:

Miles City Dispatch Center (MCC)	406-233-2900
CMR Headquarters in Lewistown	406-538-8706
CMR Jordan Field Station	406-464-5181

All fires within one mile of the CMR boundary shall be reported to FWS Duty Officer.

**C. INITIAL ATTACK**

FWS and State lands within the Executive Boundary of the CMR NWR are protected by FWS fire crews located in Sand Creek, Fort Peck and Jordan.

Management Response to wildland fires on the CMR NWR is outlined in the CMR Fire Management Plan. These actions have been reviewed and approved by the FWS Agency Administrator, and are within current FWS policy for wildland fires on Refuge lands. FWS policy directs Agency Administrators to use the Appropriate Management Response on all suppression actions involving refuge lands.

If the fire is on FWS administered lands and is within 1 mile of the boundary, a thorough risk assessment will be conducted including the following:

- Potential for fire to cross the boundary onto adjoining lands,
- Predicted weather,
- Fuel conditions, and
- Current fire activity.

## **APPENDIX D**

### **FWS CHARLES M. RUSSELL NWR FIRE MANAGEMENT ADDENDUM**

After the assessment is complete, one of the following on scene tactical suppression decisions will be made:

- Use roads or natural fuel breaks and control fire, or
- Minimize the fire size in order to limit firefighter exposures, lower costs and lower the risk of the fire escaping across the boundary.

The FWS objective is always to keep wildfire within refuge boundaries. In all cases, the judicious and prudent use of firefighting resources will be used (i.e. engines and crews). **No mechanical equipment or retardant would be used on FWS administered land without Agency Administrator and/or FWS Duty Officer approval.**

If responding resources deem that retardant is necessary to stop a fire from leaving the CMR, dispatch or Duty Officer will notify the CMR Agency Administrator or Duty Officer of the situation and get approval. If notification cannot be made then the resources shall respond as necessary with continued efforts to notify the CMR.

FWS and BLM FMOs will work closely together to ensure dispatching operations are adequate for both agencies.

The FWS will work with the BLM Jordan Station to provide staffing and an availability list of initial attack resources by 1000 hours every day to the appropriate dispatch center from June 15 to August 31 (this date may be extended dependent upon fire severity).

MCC will be responsible for dispatching FWS resources located at the Jordan field station locally, geographically and nationally. The FWS Duty Officer will status those resources as available in ROSS, if not statused as available, then a phone call to the Duty Officer should be made to confirm current status.

The following fire management personnel are designated Duty Officers of both agencies and will closely coordinate all activities assuring that all people involved are properly oriented and informed:

**BLM Fire Duty Officers:**

Eric Lepisto, FMO

Scott McAvoy, Assistant FMO

**FWS Fire Duty Officers:**

Mike Granger, FMO

Andy Schell, Assistant FMO

Kevin Beck, Assistant FMO

**APPENDIX D**  
**FWS CHARLES M. RUSSELL NWR FIRE MANAGEMENT ADDENDUM**

**D. DETECTION**

The FWS pilot conducts aerial detection flights over Refuge lands in conjunction with routine Refuge operations on a routine basis. Close coordination between MCC and the FWS is imperative for safe operations. During normal Refuge Operation flights, the Refuge pilot and/or refuge personnel sometimes do find unreported fires. These fires will be reported through normal channels to the appropriate agencies. Refuge operation flights are conducted as needed and are random as to the pattern, no maps are available.

The FWS and MCC will contact one another whenever fire detection aircraft are flying over the refuge during fire season (June 15-September 1).

## **APPENDIX E**

### **USFS CUSTER GALLATIN NATIONAL FOREST FIRE MANAGEMENT ADDENDUM**

#### **USDA Custer Gallatin National Forest Ashland and Sioux Ranger Districts and Bureau of Land Management Eastern Montana/Dakotas District**

This annual addendum is a working document developed for the purpose of implementing the Cooperative Fire Protection Agreement on a local basis. This plan is specific for those portions of the Custer Gallatin National Forest (CGF) that have fire protection provided by the Eastern Montana/Dakotas District (EMDD) of the Bureau of Land Management (BLM). Included are all the National Forest Lands (NFS) in Montana and South Dakota on the Ashland and Sioux Ranger Districts.

### **PURPOSE**

The CGF is the jurisdictional agency on NFS lands and BLM is the protecting agency. As the protecting agency, BLM is responsible for detecting and providing initial attack response to all wildland fires on NFS on the Ashland and Sioux Ranger Districts. The agencies will utilize a collaborative decision making process to determine the objectives for fire management on CGF lands in accordance with the Custer National Forest Land Management Plan and the *Fire Management Plan and Montana Cooperative Fire Agreement*.

### **WILDFIRE MANAGEMENT**

#### Fire Management Plan Guidance

BLM will be guided in wildfire response by the following Forest Plan direction, which is identified in the **Custer Gallatin National Forest Fire Management Plan** (Chapter 3.1):

- The appropriate suppression response to control, contain, or confine all wildfires will be compatible with the resource values involved, firefighter safety, and public safety.
- Fires threatening private land, human life, property, or improvements will be controlled as soon as possible providing for firefighter and public safety.
- Cooperation will be provided in interagency fire management efforts.

#### Agency Administrator Expectations

The CGF Agency Administrators will present expectations to Incident Commanders and Fire Management employees at annual meetings each spring and throughout the season as needed; the BLM FMO or Acting will be present at the meeting.

Following each fire season, the Agency Administrators will conduct a year-end review with BLM and CGF fire management personnel. This review will provide each agency an opportunity to evaluate pre-season expectations and provide feedback regarding the season's successes and identify areas that need improvement.

## **APPENDIX E**

### **USFS CUSTER GALLATIN NATIONAL FOREST FIRE MANAGEMENT ADDENDUM**

#### Initial Attack Notification and BLM/FS Duty Officer Communication

Notification of all initial attack activities to the Forest Service Duty Officer will be the responsibility of the BLM Duty Officer on call. This notification will be made within one hour of any new start occurring on Forest Service lands. The Forest Service will provide Miles City Dispatch with a Zone Duty Officer schedule by June 1 each year.

CGF resources will be available to fill the Miles City Division Duty Officer role throughout the fire season.

#### Staffing and Severity Planning

BLM Fire Management will use current BLM staffing guides and management considerations that ensure adequate levels of staffing commensurate with fire danger and risk. The staffing guides reflect where closest forces are located and their availability during early and late fire season. As the protection agency, the BLM will be responsible for determining the need for severity requests. A copy of Staffing Guides will be provided to the Forest Service.

#### Wildfire with Resource Benefit Emphasis

The Custer Gallatin National Forest Fire Management Plan provides guidelines for managing wildland fire for resource benefit or multiple objectives. As the jurisdictional agency, the CGF, with BLM consultation, will determine strategy and objectives for managing fire on Forest Service lands. Both agencies will participate in the decision making process, through routine conversations between the BLM and CGF, and on a case by case basis dependent on conditions and resource availability.

#### Natural Resource Mitigations

In accordance with National Forest Resource Management direction (Forest Service Manual 2081.2.10), all suppression actions will minimize the spread of noxious weeds by routine cleaning of agency, contracted and rented equipment at a location that will contain seed removed during cleaning. All contracts for fire management purposes will include a clause in the contract that the equipment is weed free. Known weed infestations areas will be avoided or mitigated if possible when establishing helibases and staging areas.

Fire resources should confine all vehicular travel to existing roadways. If it is necessary to drive off roadways, routes will be used that avoid establishment of new “two-track” travel routes. Roads created will be GPS’ed or mapped and included in the fire report to the district office. No mechanical equipment (dozers, etc.) will be used on forest service lands without District Ranger, or designated acting, approval.

The District Ranger will provide a Resource Advisor for suppression resources to determine and minimize the impacts of suppression action on the resources.



## **APPENDIX E**

### **USFS CUSTER GALLATIN NATIONAL FOREST FIRE MANAGEMENT ADDENDUM**

#### **Prescribed Fire**

The CGF will provide MCC a copy of signed burn plans. When a prescribed fire is declared a wildfire, the BLM and CNF will collaborate and manage the suppression response. The jurisdictional agency, with assistance from the protection agency, will assume the lead for development of the WFDSS.

#### **PROJECT WORK**

*“Supplemental Fire Project Agreement”* will be utilized under this agreement when mutually agreed upon projects are to be implemented. This agreement will be completed (fully signed) PRIOR to the incurrence of any costs.

#### **FACILITIES**

Both Fort Howes (Ashland Ranger District) and Camp Crook (Sioux Ranger District) have Intergovernmental Orders (IGO) prepared and reviewed annually for the facilities’ agreement. The BLM pays for use of Forest Service facilities based on square footage used and months of occupancy. The Forest Service will annually provide to the BLM a current rate sheet reflecting the basis of the BLM’s assessment for the use of the USFS space.

#### **QUARTERS**

As the protection agency, the BLM will be allotted space in the Forest Service bunkhouses and the Forest Service will direct bill BLM employees residing in bunkhouses or USFS housing.

#### **BLM PREPAREDNESS AND USFS FUELS ORGANIZATIONS**

The BLM and USFS are committed to providing their respective preparedness and fuels organizations to the Ashland and Sioux Ranger Districts. As budgets expand and contract, the BLM and USFS will keep each other informed of changes to their organizations prior to each fire season. Both agencies will consider mutually beneficial partnerships and shared portions of their organizations as opportunities arise.

#### **FIREFIGHTER SAFETY HAZARDS**

##### **Radiation Exposure Areas of Concern**

There are areas of elevated radioactivity associated with abandoned uranium or coal mines within the Eastern Montana Fire Zone that pose a threat to human health. Fire-fighting activities in these areas could expose firefighters to elevated levels of radiation. Primary exposure concerns for firefighters are inhaling dust generated by firefighting activities, skin contact with coal bearing soils, and ingestion of coal bearing soils during hand-to-mouth activity.

Some naturally occurring coal-seams in South Dakota, North Dakota and Montana, contain elevated levels of radioactive materials as well as other constituents of concern (arsenic, molybdenum, thorium, etc.). In some cases, historic uranium mining within these coal seams has further distributed and exposed these hazards. These areas include, but are not limited to, US

## **APPENDIX E**

### **USFS CUSTER GALLATIN NATIONAL FOREST FIRE MANAGEMENT ADDENDUM**

Forest Service administered lands in Harding County South Dakota in the following areas: North Cave Hills, South Cave Hills and the Slim Buttes.

For specific direction for field-going personnel, please refer to the “Radiation Action Plan IA Pack” and associated maps. For overview, please refer to “Responding to Wildland Fires in or Near Radioactive Locations” located in Chapter 7 of the Red Book. All materials are posted in the Miles City Dispatch Center and available at the Custer Gallatin National Forest's Sioux Ranger District in Camp Crook, SD. Miles City Dispatch Safety Management website: [http://www.blm.gov/mt/st/en/fo/miles\\_city\\_field\\_office/fire/safety.html](http://www.blm.gov/mt/st/en/fo/miles_city_field_office/fire/safety.html)

#### **Coal Seams**

Coal is naturally occurring and located in rock strata in layers or veins called coal beds or coal seams. Exposed coal seams are abundant through southeast and central Montana as well as western North Dakota and South Dakota. Coal seam fires pose a serious problem that can be a hazard to firefighter's health and safety. Coal seam fires can emit toxic gases, including carbon monoxide, sulfur dioxide, and other potentially hazardous gases.

Firefighters are typically not equipped or trained for coal seam fires and should not attempt to extinguish such fires with hand tools and engines.

Signs of a coal seam fire may include a rotten egg smell, smoking white ash, and continuous or non-continuous lines of what appears to be smoldering black rock (coal) where the flame may or may not be visible. Avoid low lying terrain in known coal seam fire areas especially early in the morning when air temps are cool. Gas tends to sink when air is cool and will accumulate in low lying areas.

Notify all incoming incident command teams and firefighting resources of known locations of exposed coal seams, coal mines, or abandoned coal mines adjacent to ongoing incidents and the risks and precautions to take when working around coal seam fires.

#### **Erionite**

Erionite is a naturally occurring mineral associated with volcanic ash altered by weathering and groundwater. Erionite is often termed an “asbestos-like mineral” due to its fibrous nature and needle-like structure. Erionite fibers are microscopic in scale and not possible to see without magnification.

On the Sioux District of the Custer Gallatin National Forest, geologic formations which have been analyzed and determined to contain erionite mineralogy include the Arikaree and White River (including the Brule and Chadron Members) Formations. All land units within the Sioux District with the exception of the North and South Cave Hills contain these geologic formations and their associated erionite.

Erionite is classified as a Class I Carcinogenic Agent. Erionite fibers, just like asbestos, when inhaled can become lodged in the linings of the lungs, heart, and abdomen and cause cancer.

**APPENDIX E**  
**USFS CUSTER GALLATIN NATIONAL FOREST FIRE MANAGEMENT ADDENDUM**

Many researchers have indicated that it is more dangerous than the 6 regulated forms of asbestos. Cancer development is associated with early (childhood and young adult) exposure. Currently, there is no Federal or State regulatory oversight related to the use of erionite.

The Custer Gallatin National Forest has developed a general information PowerPoint presentation, a “Worker Right to Know” letter, a “Photo Guide to Erionite vs. Non-Erionite Bearing Rocks” and a map of the affected geologic formations on the Sioux District to assist field-going personnel with identification of areas with erionite potential. These materials are posted in the Miles City Dispatch Center and at the Sioux Ranger District in Camp Crook, SD. Miles City Dispatch website

**APPENDIX F**  
**HARDING COUNTY, SOUTH DAKOTA, FIRE MANAGEMENT ADDENDUM**

**The following protocol shall govern the fire suppression on lands in Harding County, South Dakota under the State of South Dakota, Division of Wildland Fire, within the Miles City Division.**

MCC will dispatch Harding County Volunteer Fire Department resources off-district and maintain a rotation.

When Harding County VFDs assist in suppression of fires on Forest Service and BLM lands within Harding County and the Eastern Montana Fire Zone, the State of South Dakota will pay the Harding County VFDs. The State of South Dakota will in turn send a bill for reimbursement to the BLM.

The State of South Dakota will reimburse the Harding County VFDs for fire suppression on State and privately owned “forested” lands within South Dakota.

However, when a South Dakota VFD responds to a local fire on private, state, or federal property on state or federal jurisdiction, within that VFD’s area of primary responsibility or an adjacent area, the State will not pay for such fire suppression costs unless the initial attack effort extends for more than three hours. When the initial attack becomes compensable after three hours, payment is from time of dispatch to the time of release as noted by times on the crew time report.

MCC will manage the extended and expanded dispatch for the State of South Dakota in Harding County.

The State of South Dakota will train and support all Harding County VFDs and provide MCC with copies of red cards for Harding County VFD fire personnel.

## **APPENDIX H SAMPLE COST SHARE AGREEMENT**

### **Guidance for suppression strategies and tactics in sage-grouse habitat on BLM lands**

Conservation and protection of sage-grouse habitat is important to the overall goals of the Eastern Montana/Dakotas District. The management and conservation of sage-grouse habitat, as a priority, will be addressed in incident objectives and resource allocation. Although conservation and protection of sage-grouse habitat and sagebrush steppe is one of the District's primary objectives, it should never supplant firefighter and public safety as our top priority.

BLM's goal is to: *Sustain or reestablish the integrity of the sagebrush biome to provide the amount, continuity, and quality of habitat that is necessary to maintain sustainable populations of sage-grouse and other sagebrush-dependent wildlife species.*

To accomplish this goal fires in Sagebrush Plant Communities will use strategies and tactics that are low impact and less aggressive. Suppression efforts should include:

- Actions outside Sagebrush communities to contain a wildland fire before it enters the Sagebrush community.
- Use of retardant and foaming/gel agents by aerial and ground resources to pre-treat a community edge for the advancing fire front if can be done safely.
- Tying fires into already established barriers (i.e. roads, rocky breaks, water sources, agricultural fields, etc.) rather than creating new containment barriers that may fragment the community.
- Limited use of heavy mechanized equipment in these community types to prevent fragmentation and disturbance.
- Limited the use of backfires in these community types, unless safety and protection of property is in jeopardy.

BLM will adhere to direction and guidance provided in Secretarial Order 3336, and all subsequent updates and Instructional Memoranda issued to which pertains to conservation and management of Sage Grouse Habitat located within the Miles City, South Dakota and North Dakota Field Offices. Refer to each offices Approved Resource Management Plan (RMP) for local direction on Fire Management within these habitat types.

### **Agency Administrators within the Eastern Montana/Dakotas District**

The Eastern Montana/Dakotas District includes the Miles City Field Office, North Dakota Field Office and South Dakota Field Office. The Agency Administrators responsible for BLM administered lands within each Field Office boundary are as follows:

Miles City Field Office – Todd Yeager – Field Manager

North Dakota Field Office – Loren Wickstrom –Field Manager

South Dakota Field Office – Chip Kimball – Field Manager

**APPENDIX I**  
**EMFZ MILES CITY DIVISION- AGENCY RESOURCE LISTING**

Resource Identifier	Resource Type	Dispatch Location	Unit Name	Agency
<b>BIA - Northern Cheyenne Agency</b>				
E-141	T-6 Engine	Lame Deer	Northern Cheyenne Agency	BIA
E-5762	T-6 Engine	Lame Deer	Northern Cheyenne Agency	BIA
E-5763	T-6 Engine	Lame Deer	Northern Cheyenne Agency	BIA
E-5764	T-6 Engine	Lame Deer	Northern Cheyenne Agency	BIA
E-5741	T-4 Engine	Lame Deer	Northern Cheyenne Agency	BIA
E-5742	T-4 Engine	Lame Deer	Northern Cheyenne Agency	BIA
E-5743	T-4 Engine	Lame Deer	Northern Cheyenne Agency	BIA
DZ1	T-3 Dozer	Lame Deer	Northern Cheyenne Agency	BIA
DZ2	T-2 Dozer	Lame Deer	Northern Cheyenne Agency	BIA
Road Grader	T-3 Road Grader	Lame Deer	Northern Cheyenne Agency	BIA
<b>BLM Eastern Montana/Dakotas District</b>				
E-2601	T-6 Engine	Jordan Fire Station		BLM
E-2602	T-6 Engine	Jordan Fire Station		BLM
E-2603	T-6 Engine	Camp Crook Fire Station		BLM
E-2604	T-6 Engine	Ekalaka Fire Station		BLM
E-2605	T-6 Engine	Fort Howes Fire Station		BLM
E-2606	T-6 Engine	Fort Howes Fire Station		BLM
E-2607	T-6 Engine	Fort Howes Fire Station		BLM
E-2608	T-6 Engine	Miles City Fire Station		BLM
E-2409	T-4 Engine	Miles City Fire Station	EMDDO	BLM
E-2410	T-4 Engine	Miles City Fire Station		BLM
E-2911	Water Tender	Miles City Fire Station		BLM
H-7HX	T-3 Helicopter	Miles City Air Base		BLM
BLM Fuels Module	Initial Attack Module	Belle Fourche	South Dakota Field Office	BLM
<b>USFS Custer Gallatin National Forest</b>				
E-631	T-6 Engine	Sioux Ranger District	Custer Gallatin National Forest	FS
E-641	T-6 Engine	Ashland Ranger District	Custer Gallatin National Forest	FS
<b>USFWS Charles M. Russell National Wildlife Refuge</b>				
1 Eng J-1**	T-6 Engine	Jordan CMR	Charles M. Russell National Wildlife Refuge	FWS
1 Eng J-4**	T-4 Engine	Jordan CMR	Charles M. Russell National Wildlife Refuge	FWS
<b>Montana DNRC Eastern Land Office</b>				
E-2147**	T-6 Engine	Miles City	Eastern Land Office MT DNRC	DNRC
E-1664**	T-6 Engine	Miles City	Eastern Land Office MT DNRC	DNRC
ELO Kitchen**	T-3 Caterer	Miles City	Eastern Land Office MT DNRC	DNRC

**APPENDIX I**  
**EMFZ MILES CITY DIVISION- AGENCY RESOURCE LISTING**

<b>South Dakota State Division of Wildland Fire (SDWF)</b>				
E-462	T-6 Engine	Lead, SD	SDWFS Lead Field Office	SDS
E-433	T-3 Engine	Lead, SD	SDWFS Lead Field Office	SDS
E-667	T-6 Engine	Rapid City, SD	SDWFS Rapid City Field Office	SDS
E-668	T-6 Engine	Rapid City, SD	SDWFS Rapid City Field Office	SDS
E-669	T-6 Engine	Rapid City, SD	SDWFS Rapid City Field Office	SDS
E-660	T-6 Engine	Rapid City, SD	SDWFS Rapid City Field Office	SDS
E-648	T-4 Engine	Rapid City, SD	SDWFS Rapid City Field Office	SDS
E-261	T-6 Engine	Custer State Park, SD	SDWFS Custer State Park Field Office	SDS
E-566	T-6 Engine	Hot Springs, SD	SDWFS Hot Springs Field Office	SDS
E-564	T-6 Engine	Hot Springs, SD	SDWFS Hot Springs Field Office	SDS
E-546	T-4 Engine	Hot Springs, SD	SDWFS Hot Springs Field Office	SDS
Crew 600	T-2 Crew	Rapid City, SD	Black Hat Crew Base, Rapid City	SDS
Crew 400	T-2 Crew	Rapid City, SD	Bear Mtn Crew Base, Rapid City	SDS
State Dozer	T-3 Dozer	Rapid City, SD	SDWFS Rapid City Field Office	SDS
State Transport 3SD & 0SD	Transport for Dozer King Air 90	Rapid City, SD Rapid City, SD	SDWFS Rapid City Field Office SDWFS South Dakota State Office	SDS SDS

\*The Northern Cheyenne may request a BIA helicopter for fires on the Northern Cheyenne Reservation.

\*\*Equipment can be staffed upon request.

The Southern and Northeastern Land Offices of the Montana DNRC have engines available to support fire suppression efforts in the Miles City Division of the East Zone. Orders will come through Miles City Dispatch and on to Billings Dispatch for the Southern Land Office requests and Lewistown Dispatch for the Northeastern Land Office requests.

The counties have numerous engines for structure and wildland fire. DNRC has several engines and water tenders stationed at various fire departments throughout the counties for the County Cooperative Fire Program.

The Montana DNRC Eastern Land Office has available a Field Kitchen for dispatch. Orders will come through the Miles City Interagency Dispatch. It is capable of supporting a maximum of 300 people on extended attack fires for up to 3 days and 150 people for longer durations.

State of South Dakota has agreements with Harding County Fire Departments for Initial Attack. Lead Field Office resources are dispatched first to EMFZ requests. All SDWFS units are statused in ROSS through Great Plains Interagency Dispatch (SD-GPC) in Rapid City.

**APPENDIX J**  
**EMFZ MILES CITY DIVISION CONTACT LISTING**

**AGENCY REPRESENTATIVES**

<b>Bureau of Land Management</b>		
Diane Friez	Eastern Montana/Dakotas District – District Manager	406/233-2827
Todd Yeager	Miles City Field Office – Field Office Manager	406/233-2892
Loren Wickstrom	North Dakota Field Office – Field Office Manager	701/227-7700
Chip Kimball	South Dakota Field Office –Field Office Manager	605/892-7001
<b>United States Forest Service</b>		
Mary C. Erickson	Custer Gallatin National Forest –Forest Supervisor	406/587-6949
Ron Hecker	Ashland Ranger District – District Ranger	406/784-2344 406/223-0957 (C)
Kurt Hansen	Sioux Ranger District – District Ranger	605/797-4432 605/415-0721 (C)
<b>Bureau of Indian Affairs</b>		
Caleb Cain	BIA Northern Cheyenne Agency – Superintendent	406/477-8242
<b>United States Fish &amp; Wildlife Service</b>		
Paul Santavy	Charles M. Russell NWR – Project Leader	406/538-8706
<b>State of South Dakota – Division of Wildland Fire</b>		
Jay Esperance	Division Director	605/393-8011
<b>State of Montana - Department of Natural Resources &amp; Conservation</b>		
Chris Pileski	Eastern Land Office – Area Manager	406/232-2034
Matt Wolcott	Southern Land Office – Area Manager	406/247-4400
<b>Montana Fire Wardens Association</b>		
Rodney Dresbach	Montana Fire Wardens Association –President	406/253-0208



**APPENDIX J**  
**EMFZ MILES CITY DIVISION CONTACT LISTING**

**COUNTY FIRE WARDENS**

<b>DNRC – Eastern Land Office</b>			
Carter	Neil Kettelmann	406/775-8743 406/975-8899 (C)	ccso@midrivers.com
Custer	Bud Peterson	406/874-3510 406/853-4623 (C)	custerfire@midrivers.com
Dawson	Richie Crisafulli	406/359-4272 406/939-1650 (C)	richie.crisafulli@bnsf.com
Fallon	Randy Hoenke	406/778-2167 406/978-2167 (C)	hoenke@midrivers.com
Garfield	Ray Hageman	406/557-2341 406/977-9705 (C)	hagemanjvf@midrivers.com
McCone	Jess Beery	406/485-3326 406/939-3318 (C)	jabeery@midrivers.com
Powder River	Ray Ragsdale	406/935-2242 (C)	rayrags@goneropin@yahoo.com
Prairie	Keefer Lewis	406/635-5738 406/852-3309 (C)	sheriff@prairie.mt.gov
Richland	Larry Christiansen	406/488-4400 406/ 489-4629 (C)	tricntysal@midrivers.com
Rosebud	Rodney Dresbach	406/346-4270 406/253-0208 (C)	rdresbach@rosebudcounty.com
Wibaux	Brian Nelson	406/796-6543 701/218-0267 (C)	firechief@midrivers.com
<b>DNRC – Southern Land Office</b>			
Big Horn	Matt Redden	406/665-9860 406/679-0516 (C)	mredde@co.bighorn.mt.us
Treasure	Marlow Maehr	406/342-5577 406/679-2223 (C)	